



PROPERTY FACTSHEET  
**FENTAFRIDDLE**

WWW.FENTAFRIDDLE.COM  
01840 779190  
reservations@fentafriiddle.com



- A luxurious five star, gold award holiday cottage in North Cornwall boasting staggering sea views
- Situated in 50-acres of farmland on the North Cornish coast
- A private chef is available on request to create incredible feasts from fresh local fare
- A luxury holiday home away from home that has been awarded the prestigious five stars by the tourist board
- Trebarwith was the 1970 movie location for Malachi's Cove

***The Property***

Luxury Cliff Top Self Catering Holiday Barn in Trebarwith Strand, North Cornwall

## ***Inside***

Bring your friends and family to enjoy a stint of country-living-on-sea at Fentafriddle. This exclusive barn conversion has been recently renovated to exceptional standards. Made for family reunions, lavish hen parties, anniversaries and special occasions, Fentafriddle is made for luxury family holiday's and luxury surf breaks with all the trimmings.

- **Style:** Cornish oak, local Delabole slate and Cotswold stone flooring give the accommodation a distinctly period cottage-feel, which has been finished with a stylish blend of traditional and contemporary décor
- **Bedrooms:** The four en suite bedrooms are super-plush and stylish, with super-king-sized beds, French Toile de Jouy linen and lavish en suites. One accessible bedroom with a wet room lies downstairs and, of the three upstairs rooms, the master bedroom has the added charm of windowed pigeon nesting boxes looking out to sea and a French roll-top bath from which you can enjoy the view to Tintagel
- **For recreation:** Behind a cupboard door lies a full-scale entertainment centre that doesn't interrupt the 'away from it all' setting unless you want it to
- **Practicalities:** Downstairs wetroom for when you come in off the beach. On the eco-friendly front, all water comes from boreholes and guests are encouraged to separate recyclable rubbish. Off-road parking for up to 5 cars

## ***Outside***

In a secluded, elevated position surrounded by 50 acres of private farmland, the property and grounds afford panoramic views of the North Cornish coast from Tintagel to Trevoze Head. Please note the additional accommodation is also located within the grounds along with the main Farmhouse, which is occupied by the owners, and guests may be in residence during your stay.

## ***Food and wine***

- **DIY:** Available on a self-catering basis, the kitchen is equipped with everything you need to host lavish dinner parties – you can even enjoy the ocean views whilst you're standing at the kitchen sink! The open-plan living area opens out to a terrace with a large dining table, with floodlights and a barbecue for alfresco entertainment. Enhance your self-catered stay by adding bubbles and chocolates, a cream tea or fresh picnic from Unique Boutique.
- **In-house cuisine:** Catering is available at an additional cost and is to be arranged direct with the caterers. We are able to provide you with contacts for recommended caterers on request
- **Eating out:** In Port Isaac is the family owned The Harbour Restaurant. A short drive further south in Padstow you'll find Rick Steins Seafood eateries. Head further south onto Jamie Oliver's Restaurant overhanging the golden sands at Watergate Bay
- **Good Local Pubs:** At Trebarwith Strand is the Port William pub, fantastically positioned overlooking the rugged beach

## ***Getting there***

- **On the map:** Situated between Port Isaac and Tintagel, about a mile inland from Trebarwith Stand on the North Cornish coast. Approximately 25 Minutes from Rock
- **By car:** About 4.5 hours from London
- **By train:** The nearest train station is Bodmin Parkway, about half an hour away
- **Helipad:** Helicopter landing site at Trebarwith (HLS)

## Out and About

- Don your walking boots – the South West Coast Path is on the doorstep
- Try your hand at surfing in some of the best waves in the country
- Visit the classic Cornish fishing village of Port Isaac, from where you can head out on a fishing trip or buy fresh seafood from the harbour
- Learn to surf at Trebarwith Strand – around 20 mins on foot
- Play golf at one of many superb courses nearby, including St Enodoc, Roserrow, Bowood Park and St Kew
- Enjoy a plethora of adrenaline adventures with the Era boys! [www.era-adventures.co.uk](http://www.era-adventures.co.uk) for inspiration
- Check the weather forecast in Cornwall
- For unrivalled luxury chauffeured cars, contact Trenance Executive Travel

## ***Pricing***

Weekly: From £1995.00 up to £5000.00 (Xmas & New Year £5000.00)

Weekend: 3-nt Breaks available out of season from £1250.00

Delegate Rates: Available on request

Damages Deposit: £1,000

## ***Rental inclusive of***

Linen

Towels

Utilities

Welcome basket including wine

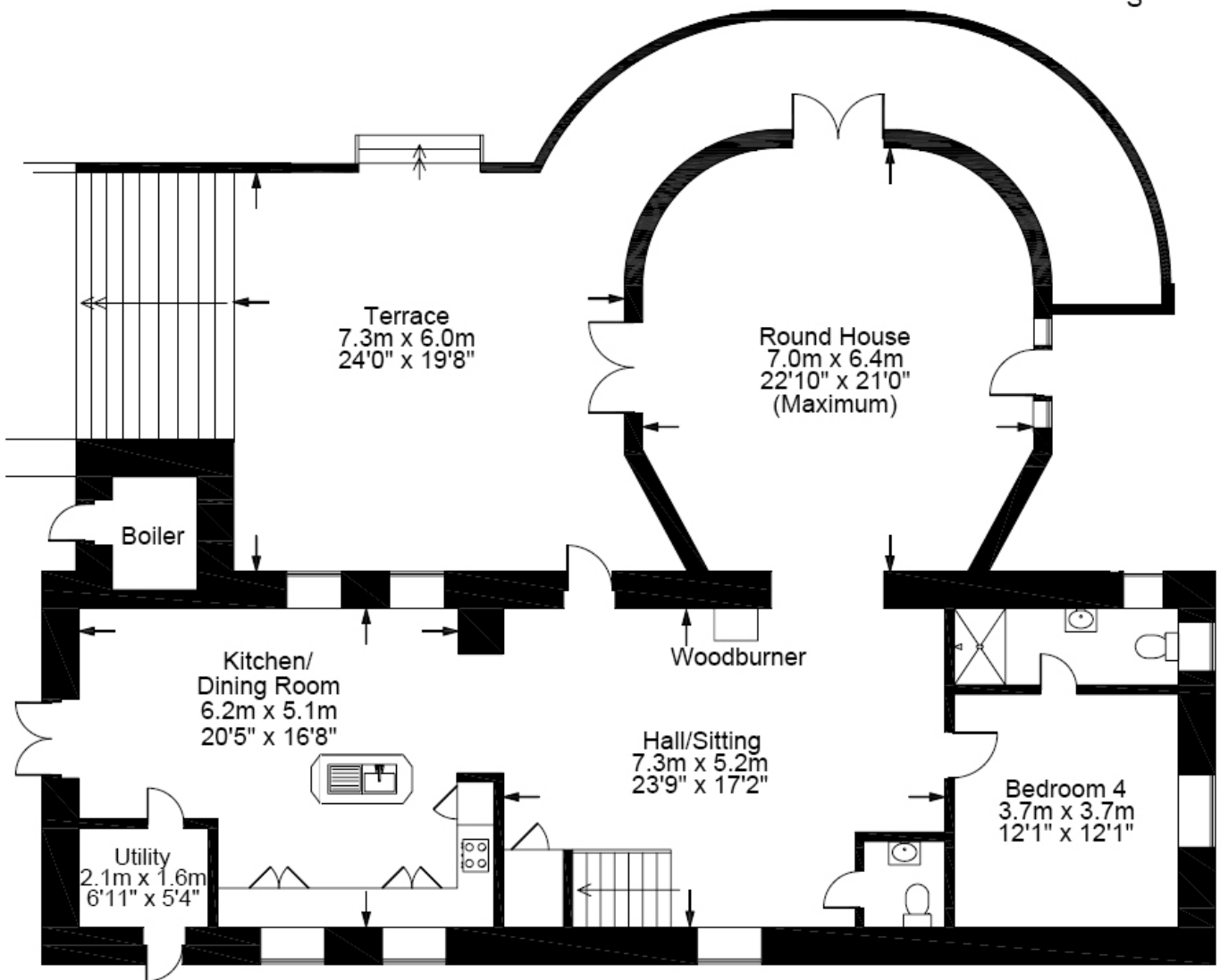
## ***Accommodation Details***

A luxury coastal holiday barn in Trebarwith Strand blending stylish, contemporary with delightful period character, occupying an idyllic position on the glorious north coast of Cornwall

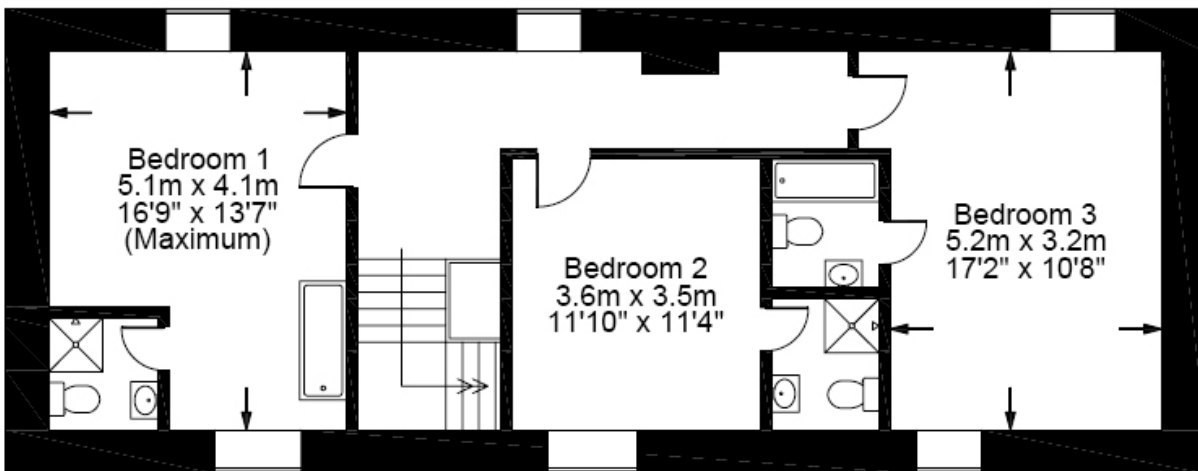
- Personally Inspected: Pending
- Sleeps: Up to 8 guests
- Smaller Group Price: Up to 4
- Double: 4 en suite (3 zip and link twin)
- Cots: There is 1 cot available at the property by prior arrangement
- Highchairs: There is 1 highchair at the property by prior arrangement
- BBQ: Gas BBQ
- Children: Yes welcome, cot available
- Pets: One to Two well behaved dogs welcome by prior arrangement
- Please be advised the 1st dog is charged at £50.00 and the 2nd dog at £50.00 per stay.
- Evening Meals: Catering available on request, please enquire for pricing and menus
- Disabled Access: Yes, there is double en suite downstairs
- Mod Cons: 'Internet-ready' television with Blu-Ray and theatre surround sound system, DVD player, Bose ipod SoundDock digital music system and full Sky satellite package, along with a good selection of DVDs
- Eco-friendly: All water comes from property's own spring via boreholes; ground source heat pumps generate the heating at the property
- Internet & Communications: Wireless broadband
- Floor Plans: Yes - View details
- Arrival Day: Friday
- Arrival Time: 4pm onwards
- Departure Time: 10am

# Floorplans

S



**Ground Floor**



**First Floor**